

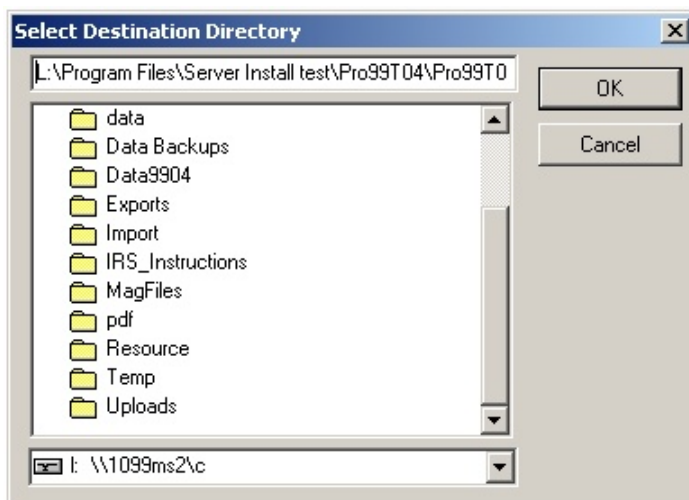
Multi-User installation with Remote Data/Program Location

1) Installing a software code ending with ME or MP will trigger a Multi-user installation. ALWAYS install the “Server” first noting that this PC will be the only PC where software updates can be applied.

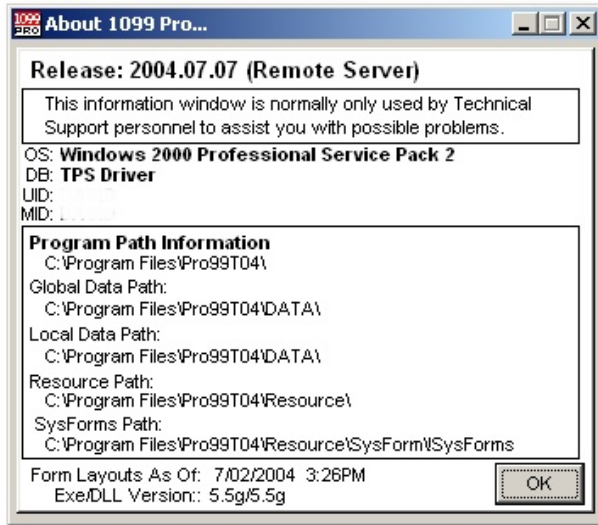
2) When installing the ‘Server’, you are presented with an option to have your data reside on another PC, Novell drive or Network Attached Storage then check the box “Allow Remote Server Installation:



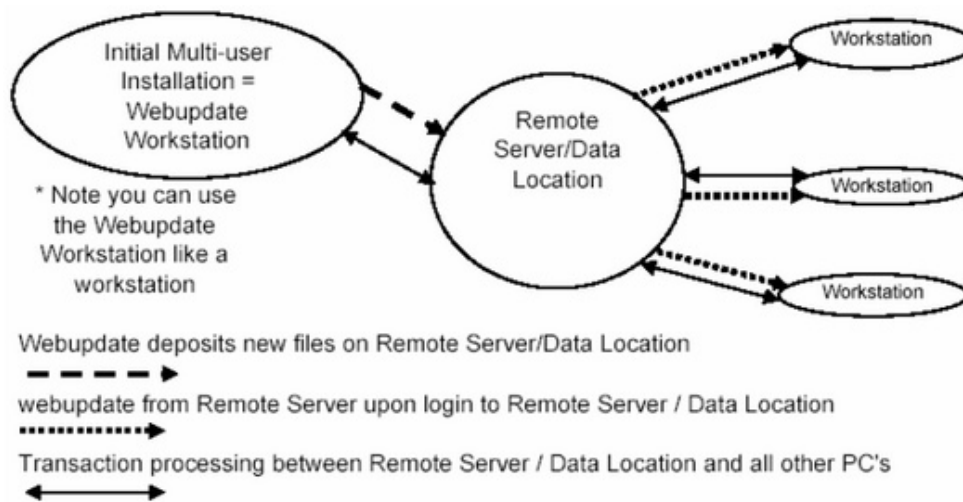
3) Click on the Browse button and select your destination directory. Note that the directory must have a path of \Pro99T04 (or similar depending if you are installing 1099, W-2 or 1042-S Pro).



4) Next you will be prompted if you wish to roll forward data such as Filers, Security Settings ... from a prior year. Once you have finished installation you can open the software, click on “Help” and “About” and then click on the graphic icon for the software and you can see the data paths involved:



Note that none of the data or program files are kept on the “Server”, they are kept at the Remote Server/Data Location .



5) When it is time to perform a Web update you will have to perform it from the “Server” that you just installed. Web updates are performed at the “Server” and in this case performing the update at the “Server” will result in the program files and the data files being updated on the “Remote Server” (on drive S in this case). Note that workstations will communicate with the Remote Server/Data Location only and not with the ‘Server’ where the software was originally installed from or the Web update was run from.

Note #1: That each Workstation must communicate with the Remote Server/Data Location via UNC or a mapped letter drive. Workstations do not have to communicate with the “1st Multi-user Installation = ‘Server’ shown above.

Note #2: 1099 Pro uses a local .ini file to store the data path of your remote data.

Verify that all users of a PC have the same mapped drive letter e.g. K or they will not be able to access the data.

For example if the Administrator of the computer has the remote drive as L: and the user has the mapped drive as K:

then the user will not be able to access the data.