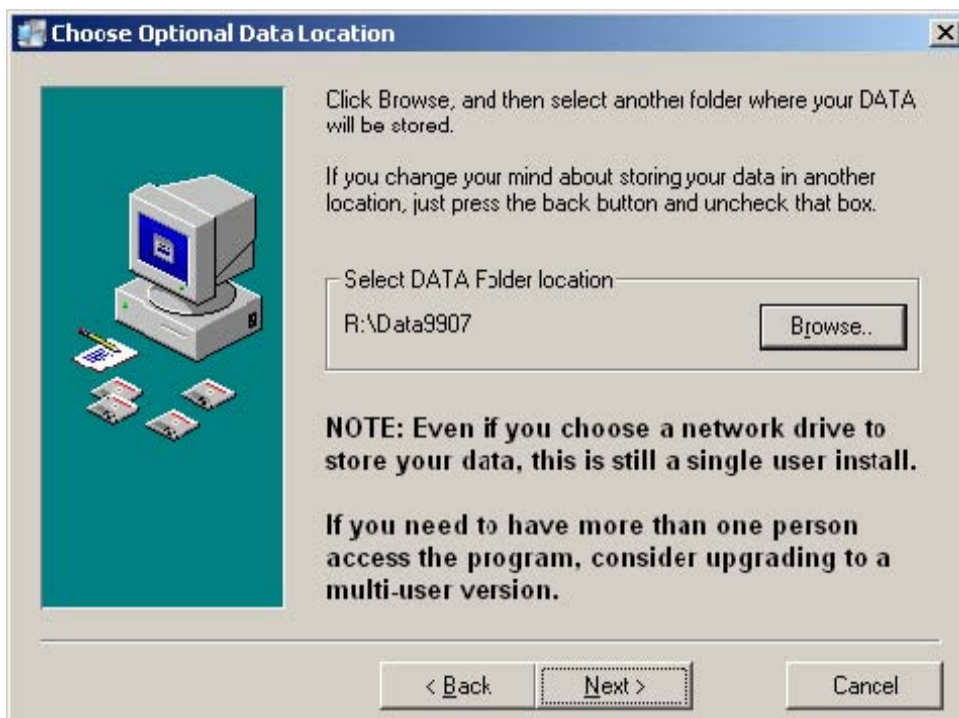


## Tech Support – Remote Data, Single User Install 2007

1. This document assumes you are doing a fresh install of 2007 software. If you already had a 2007 version of 1099 Pro/1042-S/W2-Pro installed then you must do a complete uninstall, including deleting the appropriate .ini file.
2. Start the install process for the 2007 version of 1099 Pro/1042-S/W2-Pro. At the first installation screen, click on “Next.”
3. Enter your authorization code and click on “Next.” (Entering DEMO will not work)
4. Read the Read me file and click on “Next.”
5. Read the License agreement, select “I Agree” and click on “Next.”
6. Select the checkbox “I want my data to reside in a different location” (See Image below).





7. Browse for the location where you want your data to reside. Note that your data will reside below the directory you select in a directory called Data9907. Click on “Yes,” click on “OK” and click on “Next.”

8. If data from a prior year’s installation is available then select your roll-forward option(s) and click next. Roll forward allows you to bring data from previous years into the new software. If you will be importing your data, then you do not need to roll forward your recipient data. Please note that rolling forward does not bring forward any of the financial information from the previous year. If you are connecting to a directory with current-year data that is already in place, then the roll forward will not take place so as to preserve your existing data..

9. Click on “Next.”

10. Click on “Next “and wait for it to finish installing.

11. Uncheck the box if you do not want to view the help file and click on “Finish.”